

DUSTTRAK™ ENVIRONMENTAL MONITORS

REAL-TIME DUST MONITORING FOR ANY OUTDOOR ENVIRONMENT

Whether you work at a construction site, engineering firm, or monitor the aftermath of wildfires, the DustTrak™ Environmental Monitor is a robust, reliable solution for environmental monitoring. This instrument is compatible with a variety of sensors to detect volatile organic compounds (VOCs), gases, wind speed and more. Conveniently packaged solutions allow you to measure PM10, PM2.5, or PM10, PM2.5, PM1.0 and Total PM simultaneously. TSI also offers a cloud-based management system and a DustTrak Mobile App, allowing you to access data anytime and anywhere. The compact, weather-proof enclosure houses the DustTrak Environmental Photometer, along with other key components including a long-life pump, built-in auto zeroing, and an optional heated inlet.



Features and Benefits

- + Conveniently packaged solutions for measurement of PM10, PM2.5, or PM10, PM2.5 and PM1.0 and Total PM simultaneously
- + Robust design enables long-term runtime in environments from -4 to 122°F (-20 to 50°C)*
- + Field-replaceable, longer-life pump increases measurement uptime (life expectancy >10,000 hours)
- + Optional heated inlet sample conditioning improves measurement accuracy in humid environments >50% RH
- + Real-time access to secure data and sophisticated alert system via the Cloud Data Management System
- + MCERTS models available for PM10, PM2.5, and both PM10 and PM2.5

*Requires internal heater option

Applications

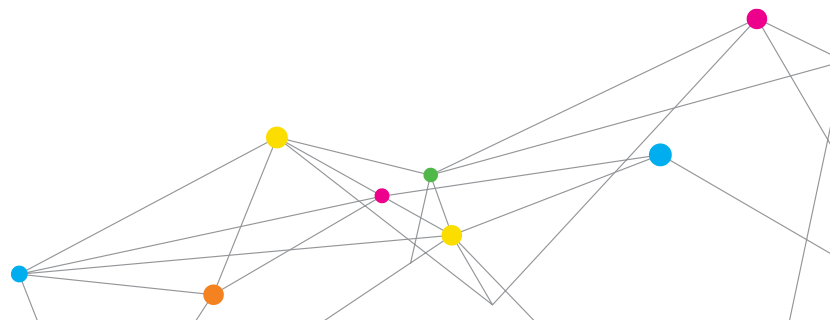
- + Fugitive emissions monitoring
- + Site perimeter monitoring
- + Fence-line monitoring
- + Environmental remediation
- + Construction and mining sites
- + Hazardous waste sites
- + Dust control operations



Sira MC160316/XX
Sira MC160317/XX
Sira MC160318/XX



UNDERSTANDING, ACCELERATED



THE DUSTTRAK ENVIRONMENTAL ADVANTAGE

CONVENIENTLY PACKAGED SOLUTIONS

| Measured Mass Fraction | Base Model Number | Base Model Contents | Optional Accessories |
|---|-------------------|--|---|
| PM10 | 854003-3 | + DustTrak Environmental Photometer + Environmental Enclosure + Netronix™ Thiamis 1000™ Quad-Band 3G/GPRS Modem, including WiFi and Bluetooth + Omni-directional Inlet with Water Trap + 24V AC/DC Main Power Supply | + Heated Inlet Sample Conditioner + Rechargeable Battery System, AC Power or Solar Power System + Pole Mount Kit + Solar Shield + Metrology Sensors + DustTrak Mobile Wireless Router + Impactor (not necessary for 854303-3) + Heater for Enclosure + Omni-directional Inlet |
| PM2.5 | 854003-3 | | |
| PMTTotal, PM10, PM2.5 and PM1.0 (simultaneous measurements) | 854303-3 | | |

Robust Design For Long Run Time

- + Built upon patented, proven DustTrak Aerosol Monitor technology
- + Long-life pump (life expectancy >10,000 hours)
- + Built-in auto zero module minimizes drift over long sample runs and temperature changes
- + Extended beam dump minimizes optical contamination
- + Secure, weather-proof enclosure
- + Active volumetric flow control
- + Heated inlet sample conditioning minimizes effects of humidity and water vapor to provide more consistent measurement

Reduced Cost Of Operation

- + Instant access to real-time data—anytime, anywhere—via the web
- + Manage multiple sites from a single location eliminates costly field trips
- + Generate reports quickly and easily
- + SMS text messaging and email alert capabilities directs workers to take action
- + Long-lasting parts minimize downtime
- + Easy maintenance with field-replaceable parts

MCERTS MODELS

| Measured Mass Fraction | MCERTS Model Number | MCERTS Model Contents | Optional Accessories |
|---|---------------------|--|---|
| PM10 | 854203-M3 | + DustTrak Environmental Photometer + Environmental Enclosure + Omni-directional Inlet with Water Trap + Impactor (not necessary for 854303-M3) + Heated Inlet Sample Conditioner + Netronix Thiamis 1000 Quad-Band 3G/GPRS Modem, including WiFi and Bluetooth | + Rechargeable Battery System + Solar Power System + Pole Mount Kit + Solar Shield + Metrology Sensors + Heater for Enclosure + DustTrak Mobile Wireless Router |
| PM2.5 | 854003-M3 | | |
| PMTTotal, PM10, PM2.5 and PM1.0 (simultaneous measurements) | 854303-M3 | | |



KEY COMPONENTS

DustTrak Environmental Photometer Models 8540/8543

The DustTrak Environmental Photometers are the heart and soul of the systems for real-time, second-by-second measurement of PM10, PM2.5 and PM1.0. They use a sheath air system that isolates the aerosol in the optics chamber to keep the optics clean for improved reliability and low maintenance as well as an extended beam dump to minimize optical contamination. Also a built-in auto zero module works to improve measurement accuracy while a robust, long-life pump maximizes uptime. A removable 37 mm filter cassette enables site-specific gravimetric calibration or sample analysis. Using patented technology, only the DustTrak DRX Environmental Photometer can simultaneously measure PMTotal, PM10, PM2.5 and PM1.0 mass fractions.

DustTrak Mobile App

The DustTrak Environmental Monitor and various DustTrak models can now communicate with your mobile device through the DustTrak Mobile App. Combined with the wireless router and antenna, the DustTrak Mobile App allows you to quickly download, review and send logged data.

Cloud Data Management System *(Optional for MCERTS Models)*

TSI partners with Netronix to provide the most comprehensive turnkey remote dust monitoring solution on the market. Using telemetry, the DustTrak Environmental Monitor continuously logs the data. The data can be accessed on demand—anytime, anywhere—with the ability to auto-send alert notifications via email and SMS text messages.

OPTIONAL ACCESSORIES

Gas Monitor GM460

This powerful handheld instrument fits inside the DustTrak Environmental Monitor. In addition to the standard confined space gases which include combustibles, O₂, CO, and H₂S, the GM460 has two additional smart channels that accept PID, IR or super toxic sensors.

Heated Inlet Sample Conditioner *(Included on MCERTS Models)*

Conditions the sampled aerosol to improve measurement accuracy by minimizing the effects of humidity when environments are consistently >50% RH.

Rechargeable Battery System

Provides continuous power to the DustTrak Environmental Monitor base system when AC power is not available. Includes two 22 Ah rechargeable batteries and battery charger.

Solar Power System

Provides continuous power to the DustTrak Environmental Monitor base system. Includes two 90W solar panels with stand, weatherproof battery and charge regulator enclosure, charge regulator, 120 Ah rechargeable battery and DC power cable.

Pole Mounting Kit

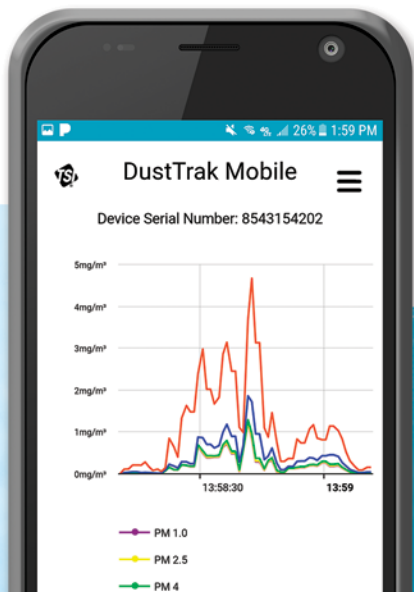
Includes bracket, hardware and mounting straps to attach Environmental Enclosure to a fixed pole (not supplied) ranging 2"-6" (50-150 mm) in diameter.

Solar Shield

Custom metal cover to shield the enclosure from sun light. Recommended for environments >104°F (40°C).

Metrology Sensors

We offer two metrology sensors. The base model measures temperature, humidity and pressure, while the advanced version measures wind speed and wind direction including temperature, humidity and pressure. Both versions include data, power connections and mounting hardware.



SPECIFICATIONS

DUSTTRAK ENVIRONMENTAL MONITORS

| | Base Models | | |
|--|---|-------------------------|---|
| Model Number | 854003-3 854203-M3 | 854003-3 854003-M3 | 854303-3 854303-M3 |
| Measured Mass Fraction | PM10 | PM2.5 | Simultaneous PMTotal, PM10, PM2.5 and PM1.0 |
| Concentration Range | 0-400 mg/m ³ | 0-400 mg/m ³ | 0-150 mg/m ³ |
| Resolution | ±0.1% of reading or 0.001 mg/m ³ , whichever is greater | | |
| Zero Stability | ±0.002 mg/m ³ per 24 hours at 10 sec time constant | | |
| Sample Flow Rate | 3.0 L/min (±5% of factory set point, internal flow controlled) | | |
| Detection Method | Light scattering laser photometer; 90° off-axis detector | | |
| Gravimetric Sampling | Removable 37 mm cartridge (filter media not supplied) | | |
| Communications | Wireless: Cloud service capability via Netronix Thiamis 1000 Quad-Band 3G/GPRS Modem, including WiFi | | |
| | Wireless: DustTrak Mobile wireless router and app | | |
| | Wired: USB (host and device) and Ethernet | | |
| Data Logging | Via Thiamis 1000: 1 Hz data rate: user selectable reporting interval from 1 minute to 24 hours (average reading). 2 GB of on-board memory, expandable to 32 GB. Stored data accessible using Environet software. ¹ | | |
| | Via internal manual mode: User selectable, 1 second to 1 hour log interval. 5 MB of on-board memory (>60,000 data points), 45 days at 1 minute logging interval. Internally stored data accessible using TrakPro Software (supplied). | | |
| SMS Text Messaging and Email Alert Capability ¹ | User programmable from Environet software | | |
| Operating Environment | 32° to 122°F (0° to 50°C) standard; extended temperature range capability of -4° to 120° F (-20° to 50° C) available with optional enclosure heater ² ; 0 to 100% RH | | |
| Environmental Enclosure | Lockable, enclosure; 16 x 12 x 12.25 inches (HWD) (411 x 305 x 311 mm) | | |
| Sample Inlet | Omni-directional inlet with water trap | | |
| Power Requirements* | Requires AC mains, rechargeable batteries or solar power system | | |
| Weight ³ | ~ 30 lbs. (13.6 kg) | | |
| Mounting | Pole mount and tripod | | |
| Approvals | + CE + MCERTS | | |

* See Required Power Options table

| TSI Data Plans | |
|----------------|--|
| TSI P/N 802915 | 12-month data plan (no activation fee) |

| System Accessories | |
|--------------------|---------------------------------|
| TSI P/N 801903 | Wireless Router |
| TSI P/N 801904 | Enclosure Wireless Mounting Kit |
| TSI P/N 854020 | PM10 Impactor |
| TSI P/N 854021 | PM2.5 Impactor |
| TSI P/N 854022 | PM1.0 Impactor |
| TSI P/N 85 4041 | Heated Inlet Sample Conditioner |
| TSI P/N 854048 | Solar Shield |
| TSI P/N 854049 | Pole Mounting Kit |
| TSI P/N 854050 | Metrology Sensor (Lufft WS300) |
| TSI P/N 854051 | Metrology Sensor (Lufft WS500) |
| TSI P/N 854053 | Tripod Mounting Kit |
| TSI P/N 854054 | Heater for 854038 Enclosure |

| Power Options | |
|----------------|---|
| TSI P/N 854039 | AC Power Mains (100-240 VAC, 50/60Hz) |
| TSI P/N 854036 | Rechargeable Battery System (Includes two 22Ah rechargeable batteries capable of running base model 42-48 hours (approx. 30 hours when using base model plus heated inlet accessory)) |
| TSI P/N 854060 | Solar Power System (Includes two 90 watt solar panels and 120 Ah rechargeable battery) |

¹ Requires purchase of TSI data plan.

² For extended temperature range capability, order Environmental DustTrak Monitor Models EDTPM10-HEAT, EDTPM2.5-HEAT or EDTDRX-HEAT (all require and include AC mains power).

³ Weight includes base model components only. Consult TSI Representative for additional information.

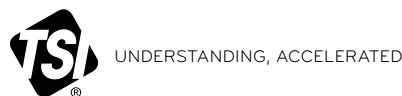
Specifications are subject to change without notice.

TSI and the TSI logo are registered trademarks, and DustTrak and TrakPro are trademarks of TSI Incorporated.

Netronix is a trademark of Netronix Inc.

To see our list of patents please visit:

www.tsi.com/patents



TSI Incorporated - Visit our website www.tsi.com for more information.

| | | | |
|----------------|-------------------------------|------------------|------------------------------|
| USA | Tel: +1 800 874 2811 | India | Tel: +91 80 67877200 |
| UK | Tel: +44 149 4 459200 | China | Tel: +86 10 8219 7688 |
| France | Tel: +33 1 41 19 21 99 | Singapore | Tel: +65 6595 6388 |
| Germany | Tel: +49 241 523030 | | |

